

229 Glenarvon Road Lorn NSW

6 🏠 6 🚗 8 🚗

Lorn Rose Farm is one of the most beloved and renowned properties in the Lower Hunter Valley. Set amongst gorgeous poplar and Jacaranda trees on the outskirts of Lorn village, it is only 3.6kms to Maitland CBD, approx. 35 kms to Newcastle and approx. 170kms to Sydney's CBD.

Sitting on a manageable 9.9 acres (approx.), there's so much to offer including the stunningly refurbished federation farmhouse, a manager's cottage, sizeable barn, converted stables, creative studio, and working flower farm infrastructure.

Exquisitely restored, the Homestead boasts a superb level of period charm and updated amenities to comfortably sleep 9 people. Four spacious bedrooms, two with lavish

[For full version visit the website](https://www.ciresydney.com.au)

Type : Acreage/Semi-Rural
Price : NEW PRICE GUIDE
View : <https://www.ciresydney.com.au/sale/nsw/hunter-valley-lower/lorn/residential/acreagesemirural/8250673>

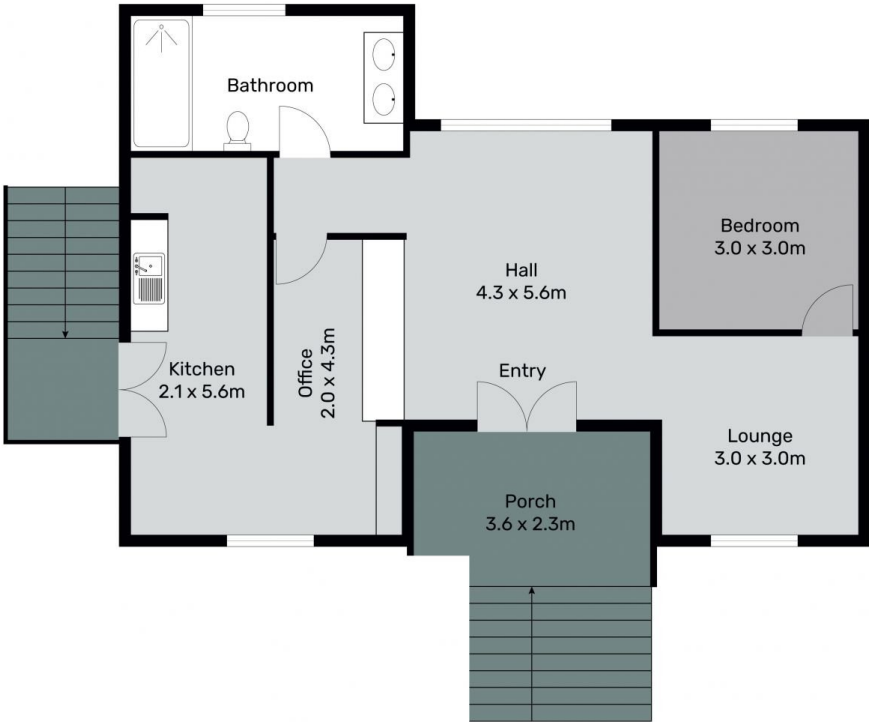


Darren Curtis
02 9328 1422



NORTH

1X 1X 1X



This information has been provided to us from the venders

All rights reserved
rect of its accuracy. Any person viewing this information should make their own enquiries and only rely on those enquiries.



NORTH

4 X 3 X 2 X

